



MODEL: Izzy
ARTIST: Alessandro



PRODUCTS

- Moisturizing Lather Shampoo®
- Keratin Cream Rinse®
- HydroCream Whip®
- Shine Spray™
- Finishing Spray™

TOOLS

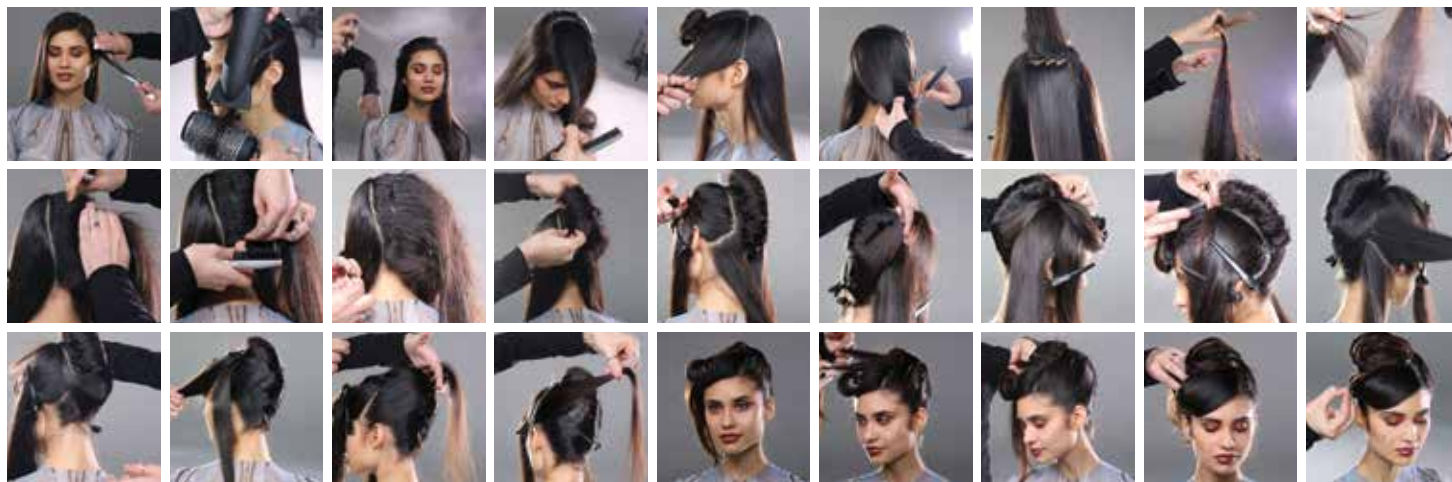
- Neuro® Grip
- Express Ion Round® XL
- Teasing Brush
- Hairpins
- Bobby pins

SUGGESTED HAIR COLOR FORMULA

the color XG® 4G + 20 volume
 Paul Mitchell® Cream Developer

PREP

1. Cleanse the hair with Moisturizing Lather Shampoo and condition it with Keratin Cream Rinse.
2. Apply HydroCream Whip to the lengths.



HOLIDAY STYLE

1. Mist the hair with Shine Spray and use the Teasing Brush to brush it away from the face.
2. Working off of the natural part, create a rectangular segment on top. Wrap up the lengths and clip away.
3. Section from the top segment to behind the ears on both sides and clip the front away. Use Shine Spray for control around the hairline.
4. Separate the back into 3 segments.
5. Starting at the top of the center back segment, take a 1" zigzagged subsection and backbrush it with the Teasing Brush. Key point: Make sure to leave out the ends and use backbrush half-moon movements to build the perfect foundation.
6. Continue this technique through the whole center back segment. Elevate it straight up and combine subsections as you go. Backbrush the entire center segment and spray it with Finishing Spray for hold.
7. Overdirect the backbrushed segment to the right and pin it vertically down the center of the segment. **Key point:** Slightly open the bobby pins to collect more hair. Start by placing them at the top of the segment, facing down. The last two bobby pins at the bottom of the segment will vertically face up to secure.
8. Smooth the right side of the center segment and roll it back over the pins, toward yourself, creating a French Twist. Wrap the ends around your fingers to neatly tuck them underneath, and pin them along the left side to secure.
9. In the back left segment, take a vertical diagonal section at the bottom. Mist Finishing Spray for control and wrap the section under and around the French Twist. Pin the tail to the top of the twist.
10. Alternate to the other side. Take a vertical diagonal section, mist it with Finishing Spray, then repeat the wraparound technique. Crisscross the previous section and pin the tail to the top of the twist.
11. Alternate back and forth with the vertical diagonal sections, wrapping around the center twist. **Key point:** As you move up the shape, wrap the sections to visually create a crisscross design.
12. In the front left segment, take a vertical diagonal forward section and wrap back and over the French Twist. Use a hairpin to hold it in place, and spray it with Finishing Spray as you go to keep control.
13. Pin the tails to the top of the twist.
13. Continue switching sides and pulling the hair back, crisscrossing it, temporarily pinning it, and placing bobby pins at the ends on the top of the twist. Spray with Finishing Spray to hold, then remove the hairpins.
14. Gather the crisscrossed ends at the top of the twist and split it into 3 subsections. Mist with Shine Spray for flyaway control. Begin to wrap the ends, using the tail of the Teasing Brush to bend and place. Use hairpins to hold them, then spray the hair with Finishing Spray.
15. Release the front clipped segment and backbrush the underneath. Smooth the top and sweep it to the guest's right side. Twist the mids once around the Teasing Brush tail and bobby pin it into place.
16. Sculpt the ends in place to create a beautiful design, using hairpins as you go to hold them in place.
17. Place bobby pins within the shape to secure it, then remove the hairpins. **Key point:** Insert closed bobby pins to provide more tension and maximum hold.